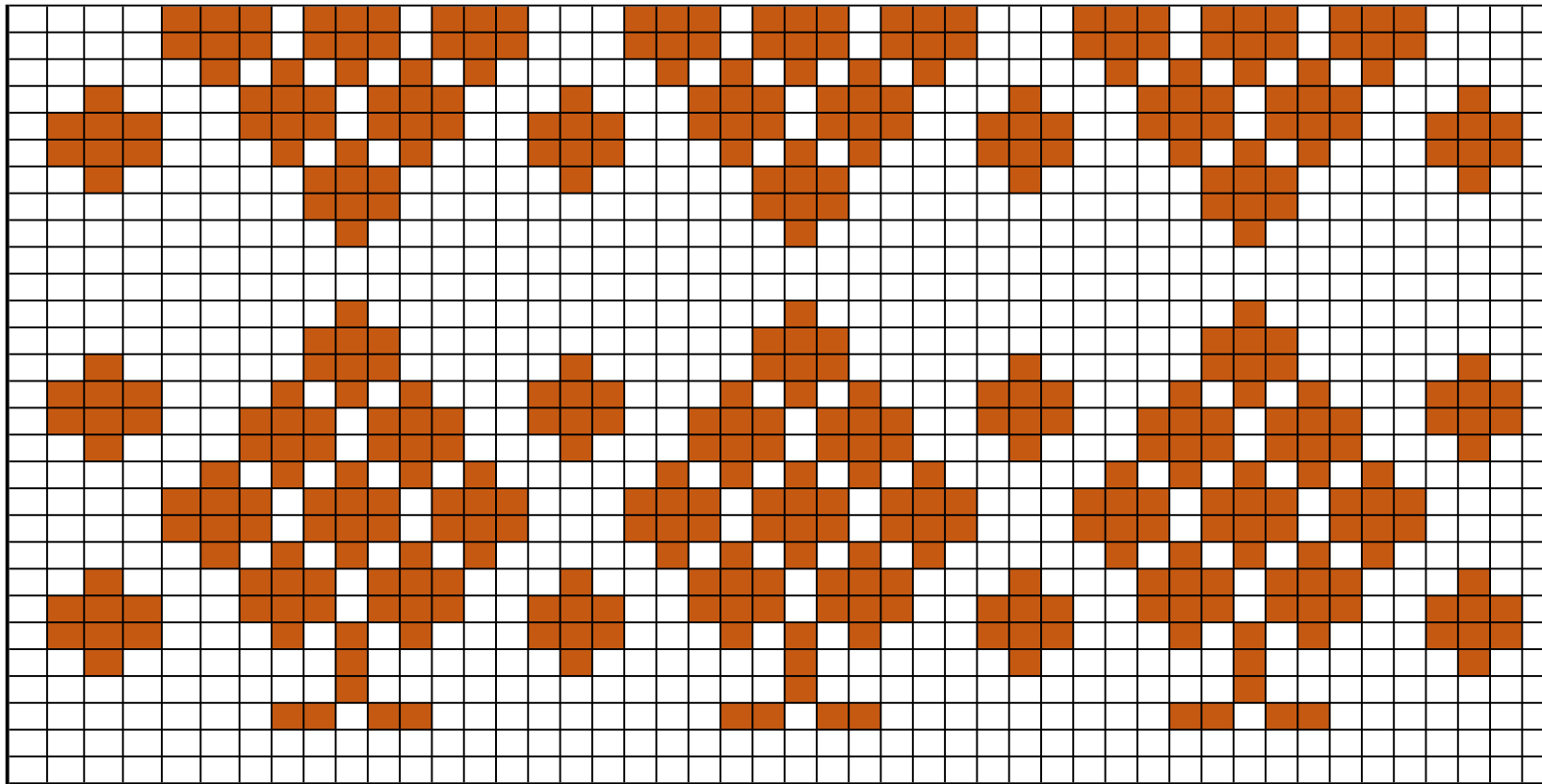


56
55
54
53
52
51
50
49
48
47
46
45
44
43
42
41
40
39
38
37
36
35
34
33
32
31
30



29
28
27
26
25
24
23
22
21
20
19
18
17
16
15
14
13
12
11
10
9
8
7
6
5
4
3
2
1

Right side row

Filet blocks z **45 44 43** 42 41 40 39 38 37 36 35 34 33 32 31 30 29 28 27 26 25 24 23 22 21 20 19 18 17 16 15 **14 13 12 11 10 9 8 7 6 5 4 3 2 1** a
 Stitches 3 135 132 129 126 123 120 117 114 111 108 105 102 99 96 93 90 87 84 81 78 75 72 69 66 63 60 57 54 51 48 45 42 39 36 33 30 27 24 21 18 15 12 9 6 3 4 ← crochet direction (from RS)

Wrong side row (at the end of every row turn the piece, so the WS looks as the RS - only the pattern is different according to the chart)

→ a 1 2 3 4 5 6 7 8 9 10 11 12 13 14 15 16 17 18 19 20 21 22 23 24 25 26 27 28 29 30 31 32 33 34 35 36 37 38 39 40 41 42 43 44 45 z
 ← 4 3 6 9 12 15 18 21 24 27 30 33 36 39 42 45 48 51 54 57 60 63 66 69 72 75 78 81 84 87 90 93 96 99 102 105 108 111 114 117 120 123 126 129 132 135 3

□ .= 3 dc ■ .= 2ch, skip 2, dc - RS and WS are equal a ..initial dcs z ..last dcs One repeat